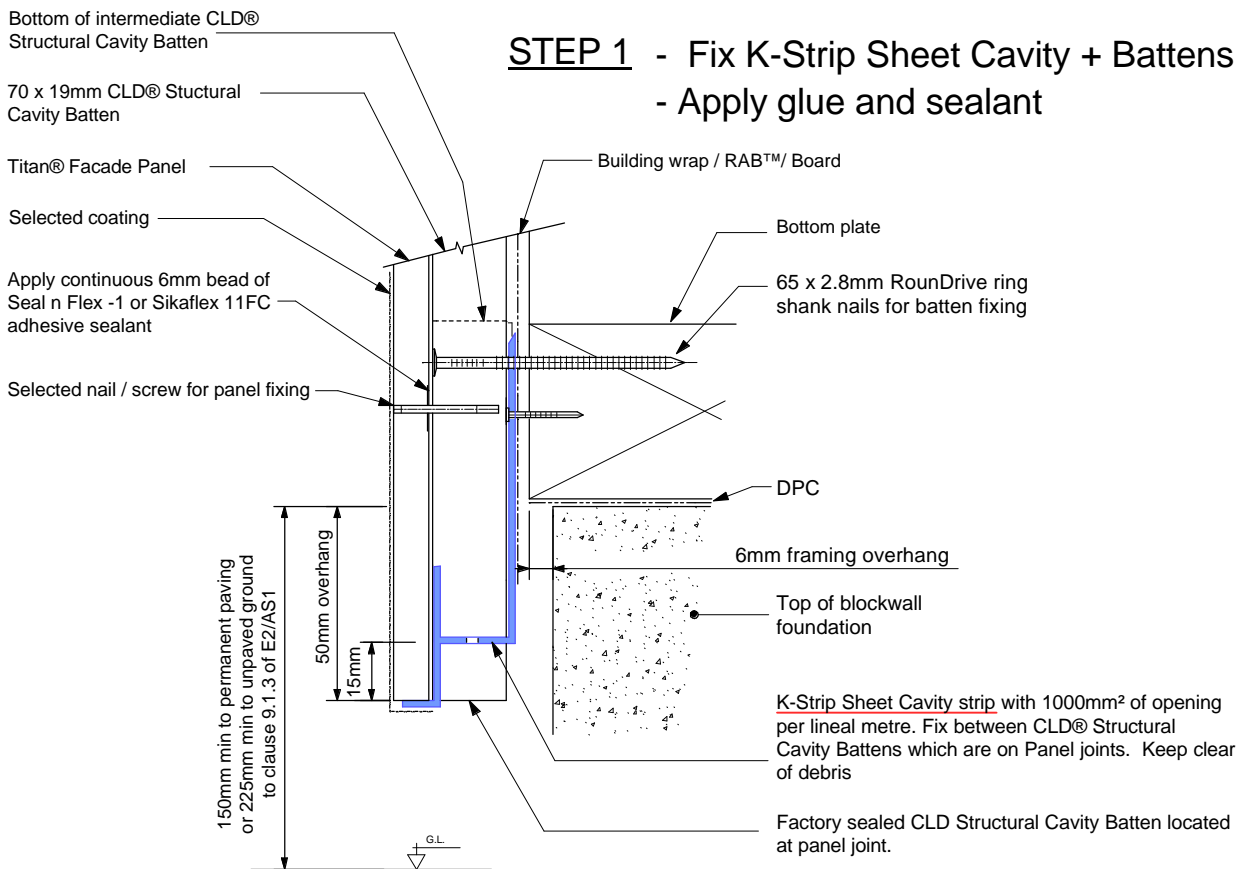


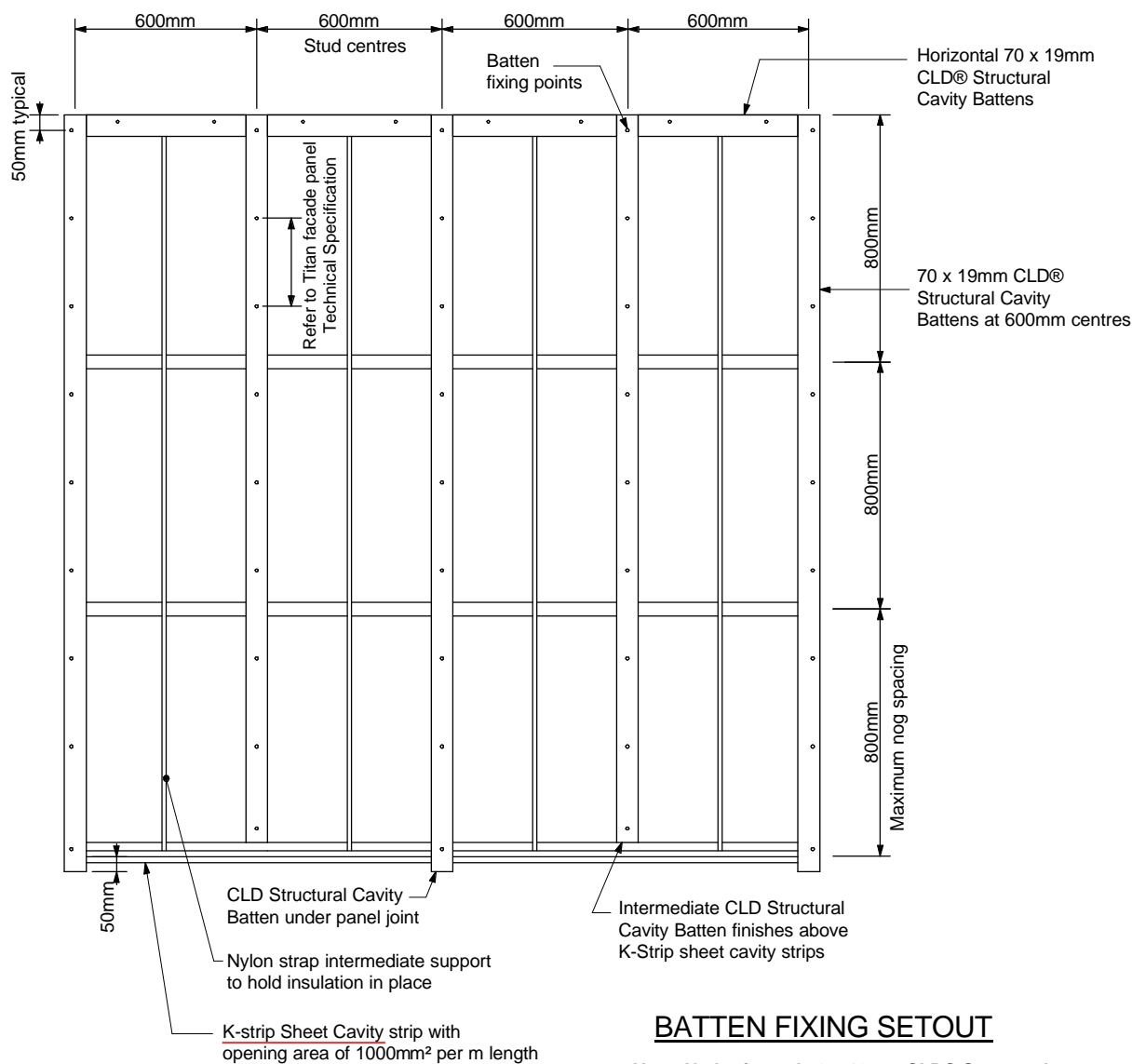
STEP 1 - Fix K-Strip Sheet Cavity + Battens - Apply glue and sealant



STEP 2 - Fit Titan Panel - Remove excess sealant

Notes:

- Titan® facade panel must be installed in accordance with the instructions of Titan Facade Panel & CLD Structural Cavity Batten Technical Specifications
- Check panel extends past bottom plate as specified in Architects specification (50mm min).
- K-strip must remain level and secure during construction. Cut and fix K-strip between CLD® Structural Cavity Battens fixed under the panel joints.
- Check vent strip is free from site debris.
- Refer to Table 3 of James Hardie's Technical Specifications for Titan® Facade Panel and CLD Structural Cavity Battens for fixing options.



BATTEN FIXING SETOUT

Note: No horizontal 70 x 19mm CLD® Structural Cavity Battens required at nogs